



August 1-3, Foundation University, Dumaguete

PISTATA NG MAPA



open data & software • free maps • community • talks • workshops



KAART



mapbox



Mapillary UΔV4GEO

HOT - PDC PhilAWARE Programme

Introduction & Proposed Approach



HOT & PDC



Joint venture with the **Pacific Disaster Center (PDC)** to

- provide disaster management tools & data
- improve overall risk-assessment, early-warning and decision-making

We work to enhance capacity within national and provincial/municipal disaster management agencies to access automated international, regional, national, and local hazard information and supporting exposure data.

This information includes real-time crowdsourced data that will be shared between agencies, with alerts and warnings disseminated to the impacted communities.

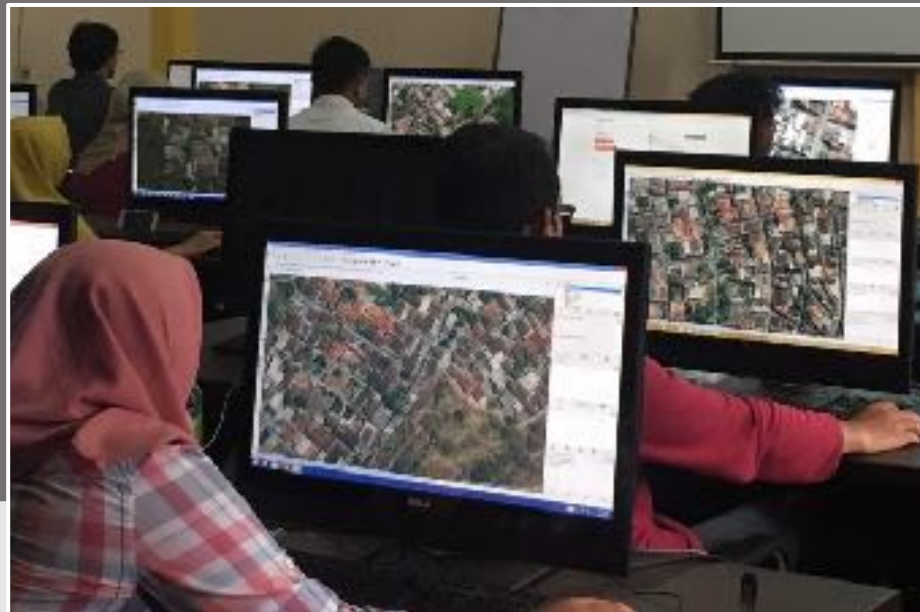




Primary Objective

To provide **standardized, accurate, and up-to-date** maps of key **lifeline infrastructure** and associated attributes in OSM for the targeted cities.

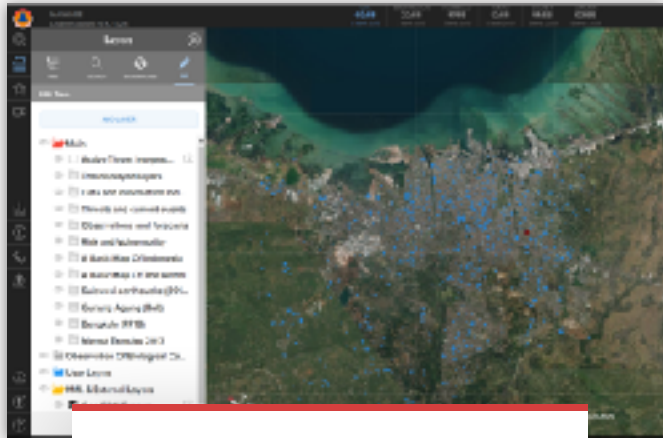
These maps highlight risk, exposure, and vulnerability of populations and infrastructure at the community level.



Secondary Objective

Strengthen and expand the OSM community while developing **sustainable maps and data** that can easily used and updated for development and DRR activities, both at the local and national level.

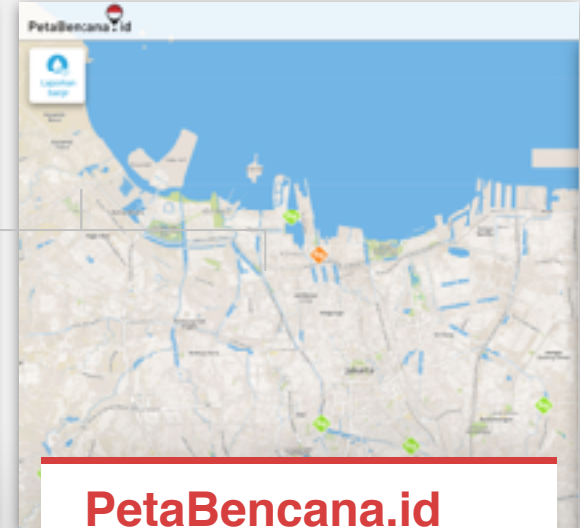
Use Cases (Indonesia)



**National
Government**



**Local
Government**
BPBD / Village Office



PetaBencana.id





infoware
Desain WAJIB 4 2016

00:32 01:52 03:32 04:52 05:52 06:52
0 100 200 300 400 500

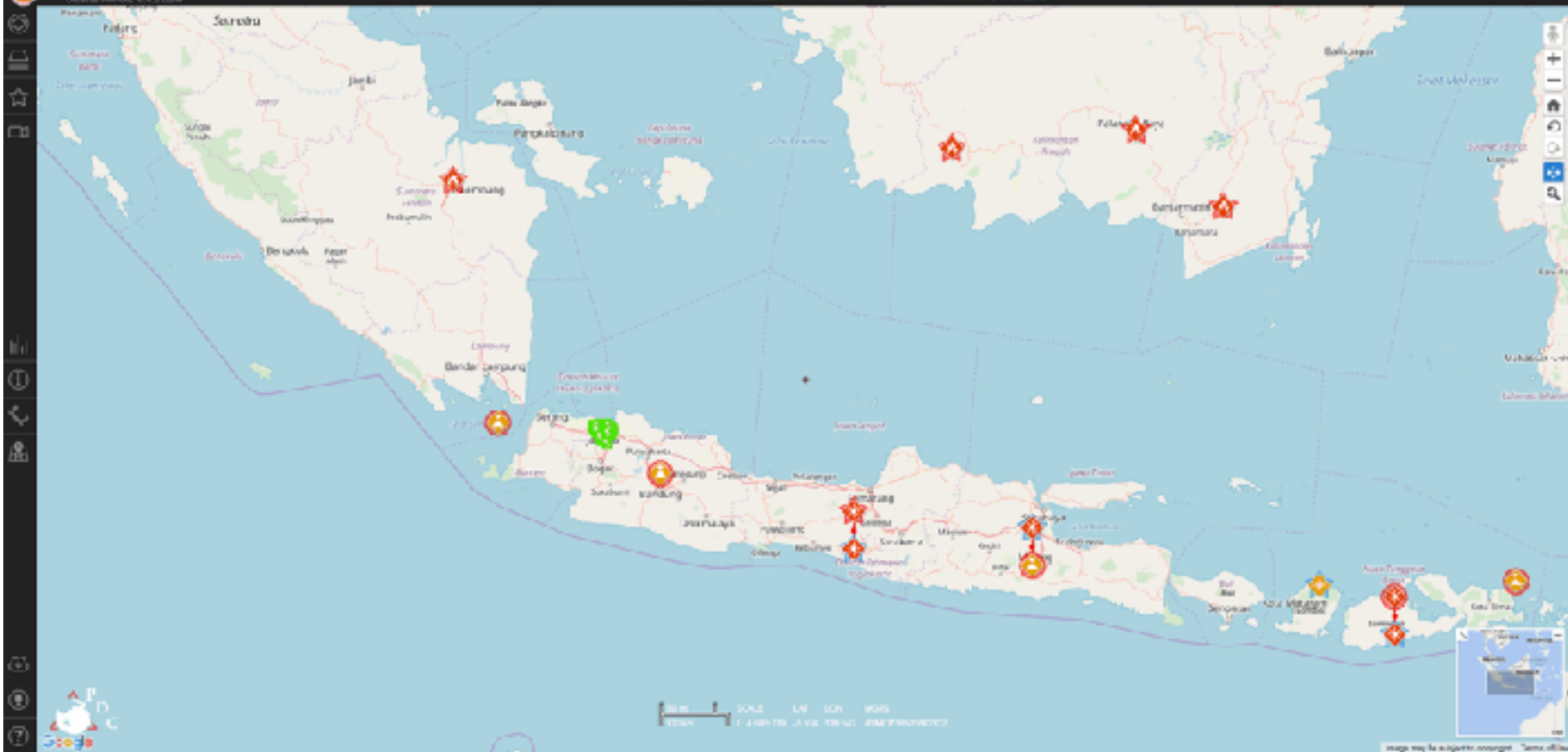


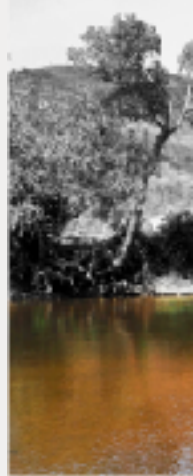
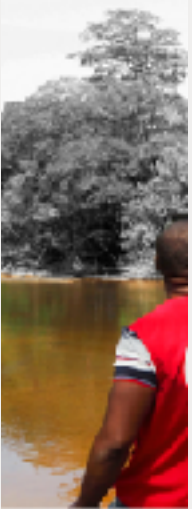
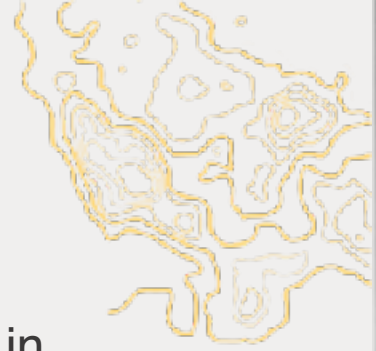
image may be subject to copyright. Terms of use

Proposed activities

- Automatic integration of base OSM datasets in PhilAWARE
- Collect existing baseline data via data sharing agreements
- Integration and collation of Government datasets with OSM

Assist in addressing identified data gaps:

- Standardization of datasets and data models
- Large scale digitization of exposure data utilizing ML and AI assistance (infrastructure; buildings and roads)
- Additional mapping and surveying where requested



Addressing data gaps

Indicators used to define these areas can include:

- NDRRMC's Gawad Kalasa program
- Hazard Risk Index & prevalence
- Current OpenStreetMap coverage
- Population
- Accesibility from/to Manila
- Local Government support
- OpenStreetMap community / PRC Volunteers presence



Initial Proposed Area

Based on initial consultation with stakeholders, PRC's senior management, NDRRMC's Gawad Kalasa program and existing OSM Philippines most active volunteer organizers, in Phase 1 HOT initially proposed one of these area:

- Batangas
- Pampanga
- Cebu
- Albay
- Sorsogon
- Mountain Province
- Aklan
- Ilocos Sur
- Davao del Norte
- Quirino
- NCR- Quezon City
- NCR – Manila
- NCR – Marikina





Humanitarian
OpenStreetMap
Team

PDC-InAWARE
Programme

