



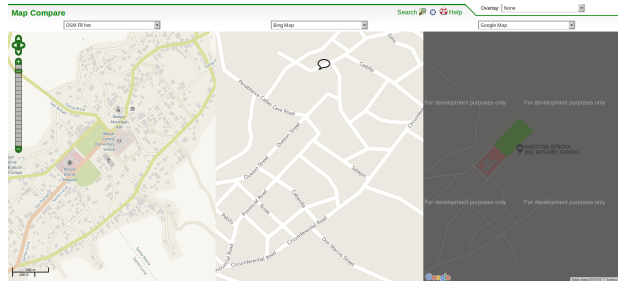
Mapping the Fire Stations of Negros!

slide: <https://hackmd.io/@GOWin/r1pb29cfS#/> (<https://hackmd.io/@GOWin/r1pb29cfS#/>)

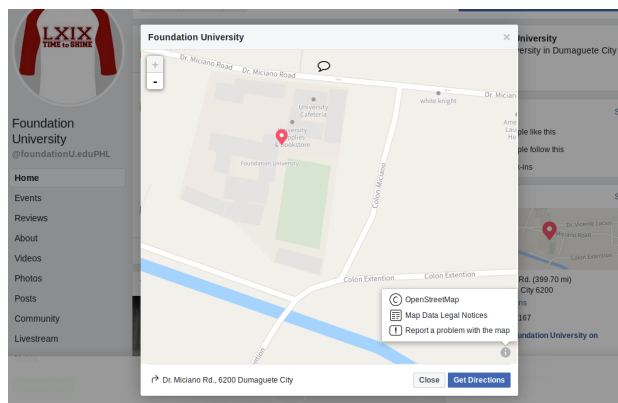
Who am I?

- Erwin Olario
 - erwin@ngnuity.xyz
 - <https://t.me/GOWin> (<https://t.me/GOWin>)
- OpenStreetMap advocate
- Open Data/Free Software enthusiast

Why map? Why OpenStreetMap?



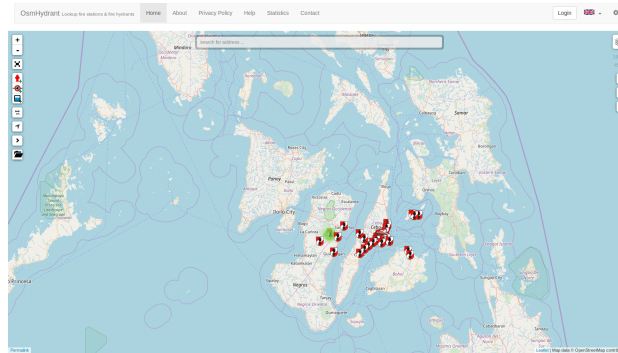
- mapping allows you to create maps of your favorite neighbourhoods/and important places
- OSM gives out not just maps, but the data as well.
- data add to OSM ends are consumed by many other apps, and could be useful for disaster preparedness and community planning



Note:

- OpenStreetMap is the map you probably use but don't know of.
- Has anyone here used OSM?
 - No? Who uses FB?

www.osmhydrant.org (<http://www.osmhydrant.org>)



Note:

- Current state of Fire stations maps in Visayas

iD Editing Crash Course

<https://pygy.co/ideditor> (<https://pygy.co/ideditor>)

Register for an OSM account

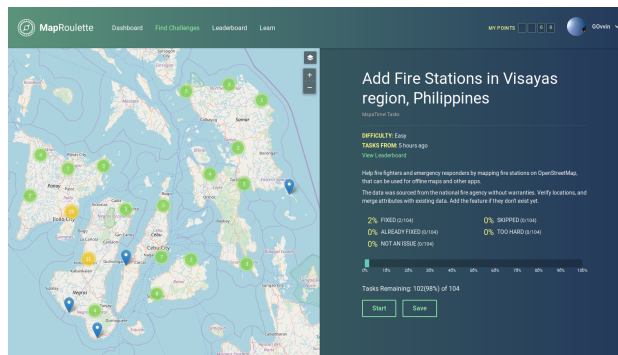
<https://www.osm.org/user/new> (<https://www.osm.org/user/new>)

MapRoulette Tasking Manager

<https://maproulette.org/browse/challenges/8330> (<https://maproulette.org/browse/challenges/8330>)

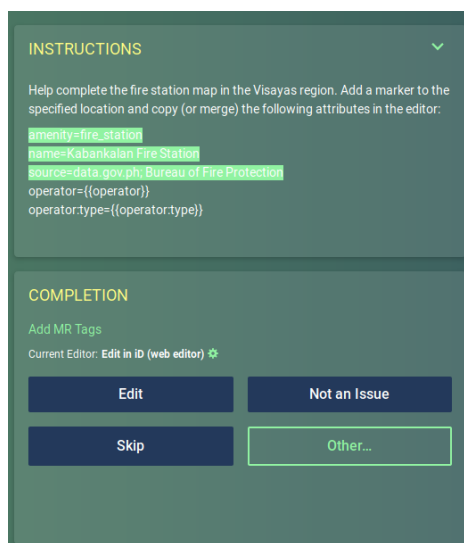
Note:

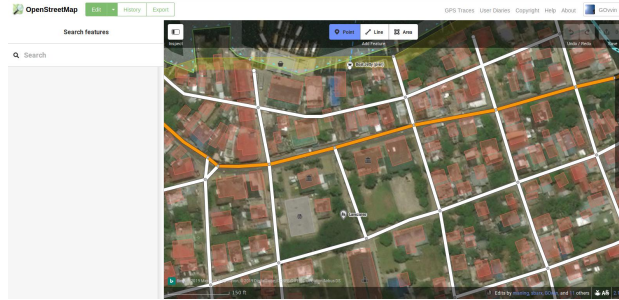
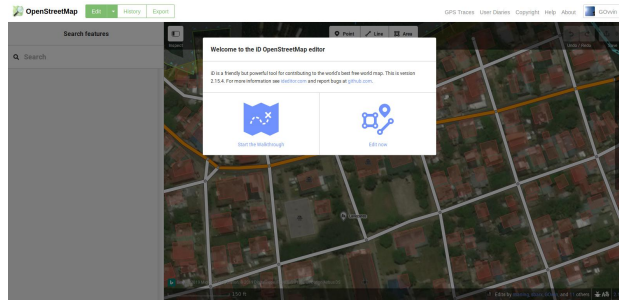
- Add - <https://maproulette.org/challenge/8330/task/21774019> (<https://maproulette.org/challenge/8330/task/21774019>)
- Conflate - <https://maproulette.org/challenge/8330/task/21773988> (<https://maproulette.org/challenge/8330/task/21773988>)
- Demo - <https://maproulette.org/challenge/8330/task/21773970> (<https://maproulette.org/challenge/8330/task/21773970>)



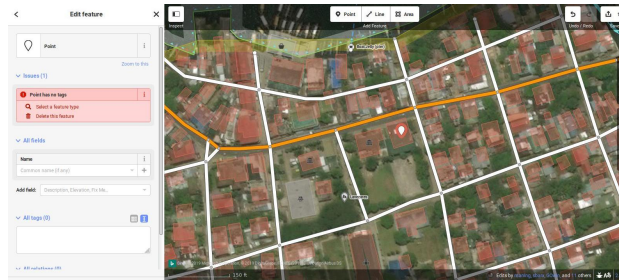
Note:

Click on the Start button for a random task.

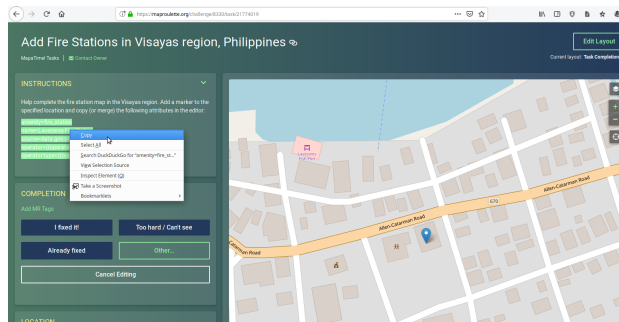


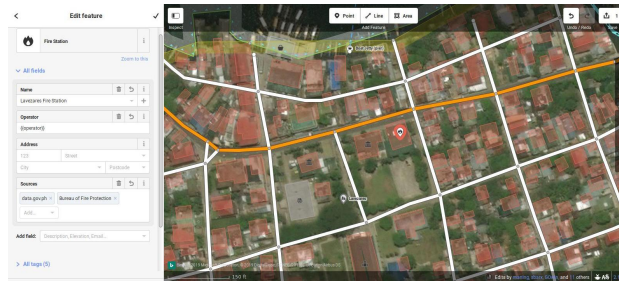


Note:
on the left panel, type "poi", and select it

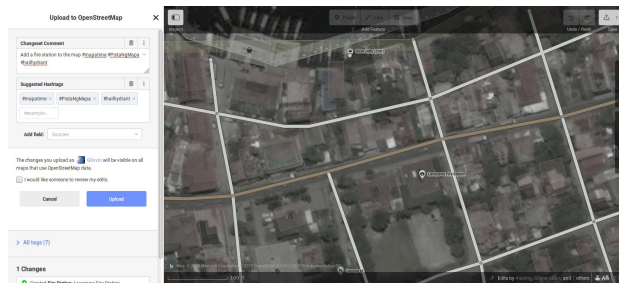


Note:
click on All tags, select Text



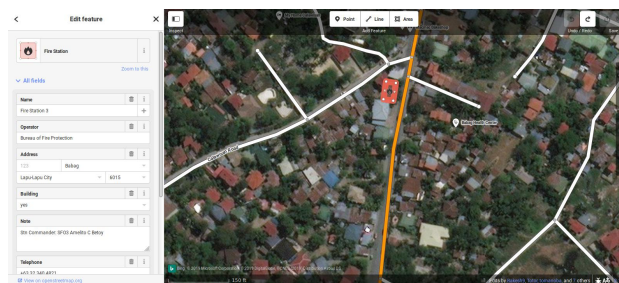
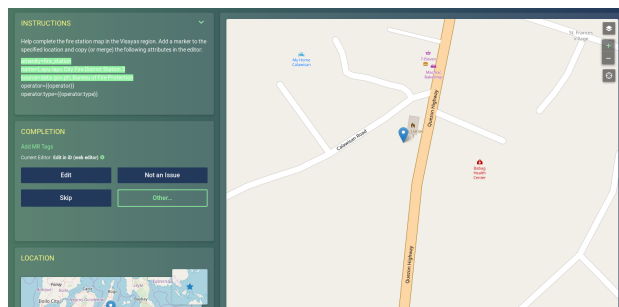


Note:
If you accidentally copy text with curly brackets strings, remove them



Conflating POIs

If a fire station already exist in the vicinity, merge the missing attributes to it.



Select the feature by clicking on the outline of the polygon or the POI itself.
This POI only has a generic name

